


# Road to Sustainability

**Sustainability from Awareness to Action**

Workshops, ESG Data Management, Decarbonization

**MindTrust**  
SUSTAINABILITY

# What we do



## Ecological Awareness Workshops

Our 3-hour Ecological Awareness Workshops aim to **deepen teams' understanding of critical ecological challenges** like climate change and biodiversity loss. Participants will **learn key scientific concepts, sustainability principles, and practical methodologies** for measuring impact and decarbonization.

## ESG Management



We leverage expertise and platforms to efficiently **collect, measure, and analyze** environmental, social, and governance (ESG) **metrics**, allowing comprehensive data collection. It helps companies **set and track ESG targets**, and make data-driven decisions that **support sustainability goals**.



## Impact Reduction

Our Impact Reduction initiative uses a systematic approach to address **pre-identified levers for reducing environmental impact**. Teams **set realistic SMART targets** and implement **detailed actions**, including decarbonization, organized in **sustainability roadmaps**.

# How do I get my team's ecological knowledge ready?

Through these sessions, participants gain a **comprehensive grasp of key scientific concepts and sustainability principles**. These workshops aim to **empower teams** with the knowledge necessary to make **informed decisions and take meaningful action** towards sustainability.

# 01



**CL!MATE  
FRESH**

**2100mes**



**The  
Biodiversity  
Collage**

**The Digital  
Collage**



Now that the  
team  
understand,  
what do I do?

# WE MEASURE!

We collect data leveraging **automatised tools** and present you results according to different **different standards** and protocols, we include **a wide range of ESG metrics**

various ESG platforms to support data collection



greenly



ISSB



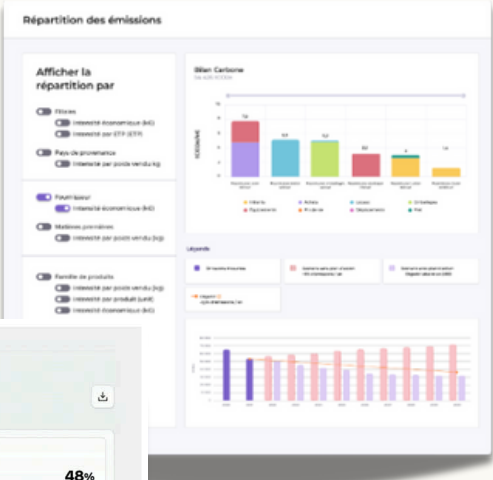
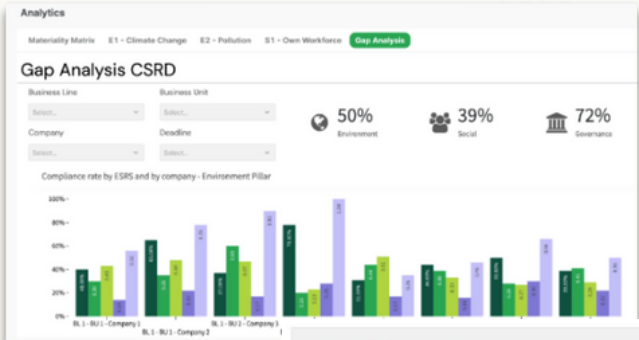
02

Now that  
we've  
measured,  
what's next?

WE ANALYSE

Hotspot of ecological impact prioritise and identify  
where we can have efficient action

Option for various platforms to support ESG analysis collection



GHG Protocol

Location based | GHG Emissions | Filters | All time

INDUCED EMI: 99.07k  
GHG Removals: 11.22.01k  
Investees GHG emissions: 11.22.01k

RELEVANT CATEGORIES COVERED: 0 Measured, 0 Not measured

EMISSION FACTOR TYPES: 52% Physical, 48% Monetary

Scope	GHG category	Value	Emission factor types
1.1	Direct GHG emissions from stationary combustion	427.76 tCO2e	Physical
1.2	Direct GHG emissions from mobile combustion	19 104.51 tCO2e	Physical
1.3	Direct physical or chemical processing GHG emissions	-	-
1.4	Direct fugitive GHG emissions	2 482.61 tCO2e	Physical
1.5	Direct GHG emissions and removals from land use, land use c...	-	-
2.1	Indirect GHG emission from imported electricity	2 601.77 tCO2e	Physical

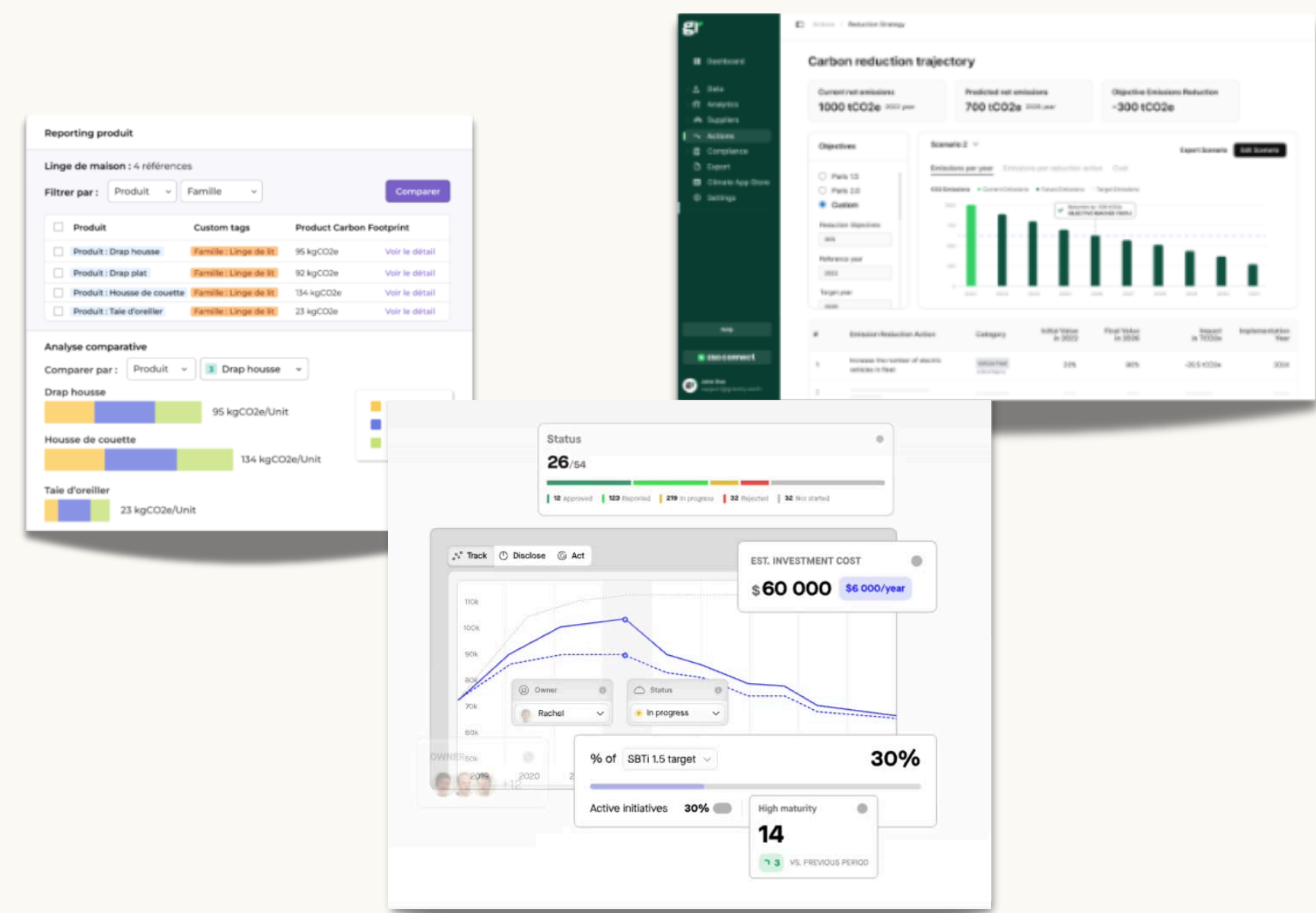
03

05

How do we  
continue the  
effort?

# WE MONITOR & ADJUST

We measure the **ecological impact** and **adjust the related effort** to ensure we are **aligned with the targets**



We support your  
transition Journey

## **WE EDUCATE**

Through ecological awareness workshops

## **WE MEASURE & ANALYSE**

using ESG data management

## **WE TAKE ACTION**

for decarbonisation & impact reduction

## **WE MONITOR & ADJUST**

and align with targets

# Why believe in MindTrust?

01

We have certified experts about carbon accounting



We are certified for carbon footprint accounting

Our team is specialized in using the most advanced ESG platforms

02.

We have done more than 300 ecological workshops in the last 5 years

03.

200+ initiatives for our customers to decarbonise including supply chain, retail, procurement, manufacturing, across 20+ sector and industries

# They Trust Us

## Education and Universities



## Energy



## Lifestyle



## Transport



## Technology



## Construction



LafargeHolcim



Jan De Nul GROUP

## Banking and Insurance



BNP PARIBAS



CRÉDIT AGRICOLE

## Luxury



## Chambers



## Logistics, communication, talent



AND MANY MORE. . . !

# Our passionate and experienced team

## WE HAVE

**10+ years** of sustainability and  
**climate education**  
**experience** in 2025 (ie supply  
chain/carbon accounting)





Each 0.1 degree  
counts  
Let's not wait!

**Our regional team  
is here to support you**

**Contact us:**  
contact@mind-trust.com

**<https://www.mind-trust.eco/>**

